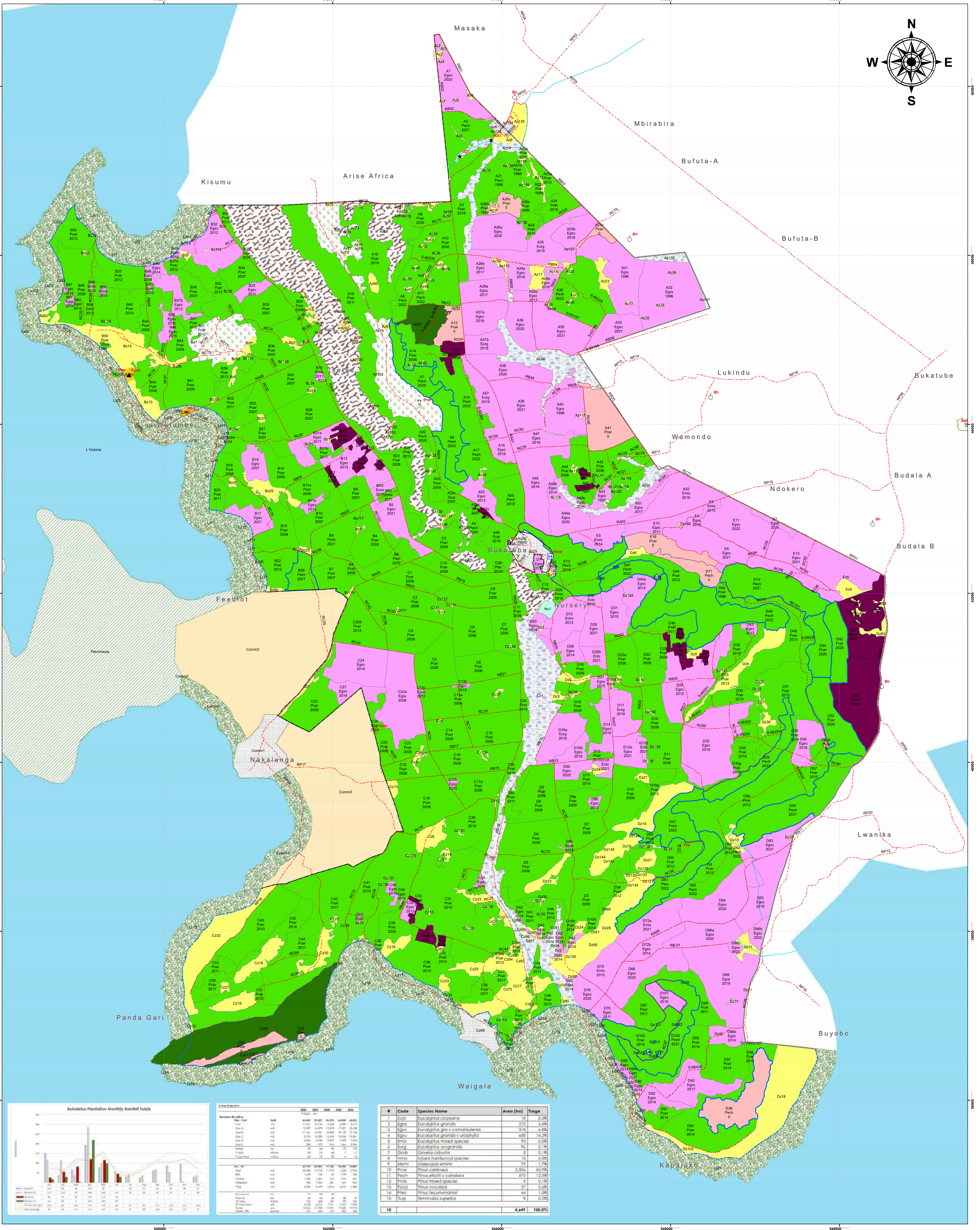


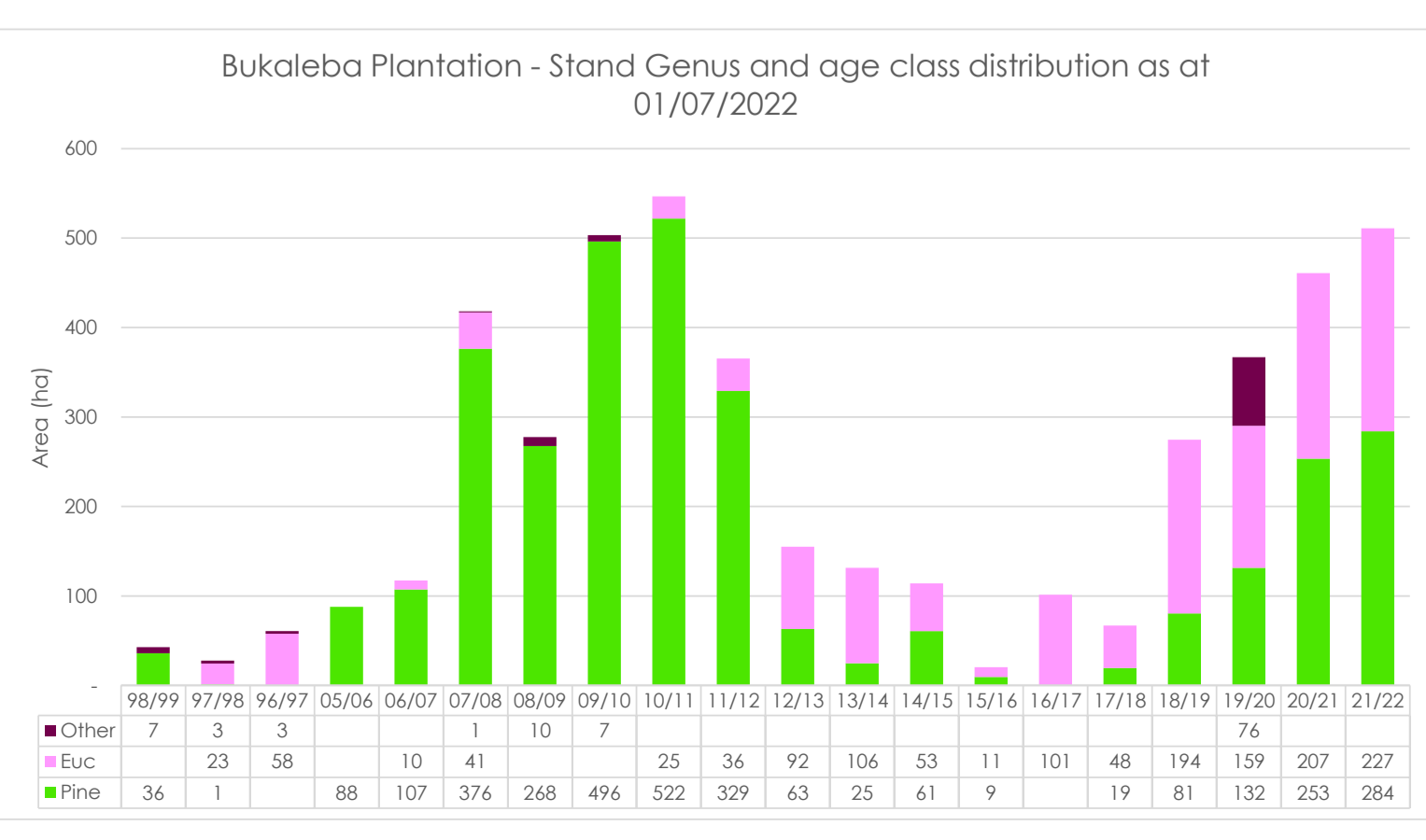
# FOREST MANAGEMENT MAP - BUKALEBA PLANTATION



Year	2007	2008	2009	2010	2011	2012	2013	2014	2015	2016	2017	2018	2019	2020	2021	2022
Area (ha)	1000	1100	1200	1300	1400	1500	1600	1700	1800	1900	2000	2100	2200	2300	2400	2500

#	Code	Species Name	Area (ha)	%age
1	Ecol	Eucalyptus cloaciana	13	0.3%
2	Egno	Eucalyptus grandis	210	4.3%
3	Egnc	Eucalyptus grandis + camaldulensis	315	6.5%
4	Egna	Eucalyptus grandis + aridifolia	450	9.4%
5	Emis	Eucalyptus mixed species	93	2.0%
6	Eurg	Eucalyptus urophylla	95	2.1%
7	Geno	Genesia robusta	5	0.1%
8	Hmis	Mixed hardwood species	18	0.4%
9	Mami	Melaleuca armillaris	79	1.7%
10	Rice	Rhus caribaea	2,324	48.1%
11	Pmsh	Rhus allicia + caribaea	870	18.1%
12	Pmsh	Rhus mixed species	5	0.1%
13	Pmsh	Rhus coccoloba	27	0.6%
14	Pmsh	Rhus leucocarpa	24	0.5%
15	Pmsh	Rhus leucocarpa	24	0.5%
16	Pmsh	Rhus leucocarpa	24	0.5%
17	Pmsh	Rhus leucocarpa	24	0.5%
18	Tmup	Terminalia superba	8	0.2%
19			4,647	100.0%

Plantation	Licensed area (ha)	Planted area (ha)	TUP	Conservation area (ha)	Open area Unplanted (ha)	Plantable Open area (ha)	Infrastructure
Bukaleba	6,466	4,647	281	95	1,273	146	22



### Legend

- Water Sampling point (WSP)
- Worship site (Wsh)
- Bore hole - (Bh)
- Fire tower - (Ftw)
- Health Centre - (H)
- Pyramid - (Pym)
- School - (Sch)
- Telephone mast - (Telm)
- Slavery trench
- Worship site - (Wsh) - (at other values)
- Roads
- Bukaleba Seed School
- Streams
- BFC land Boundary
- Community allocation boundary
- External boundary
- Lake Buffer boundary
- Expansion
- Compartments - Genus: Euc, Other, Pine
- Other Land-use types: Area of special interest
- Commercial area
- Community allocation
- Conservation area
- Imanyiro Peninsula
- Lake
- Lake buffer
- Open areas
- Rocky areas
- Settlement
- Tree Nursery
- Underlying rock
- Wetland

Coordinate System: WGS 1984 UTM Zone 36N  
 Projection: Transverse Mercator  
 Datum: WGS 1984  
 False Easting: 500,000.0000  
 False Northing: 0.0000  
 Central Meridian: 33.0000  
 Scale Factor: 0.9996  
 Latitude Of Origin: 0.0000  
 Units: Meter

Planning Department  
 P.O. Box 1900  
 Plot 98/ Kyaggwe Avenue,  
 Jinja, Uganda  
 Map Date: July 2022